



# WISCONSIN RAPIDS SUNRISE SCRIPT

Volume 24, Issue 6 Website: [wisconsinrapidsrotary.org](http://wisconsinrapidsrotary.org)

August 31, 2017

District 6250 Wisconsin Rapids Rotary – Sunrise – Club No. 31198, Chartered 12/29/95  
Box 1181, Wisconsin Rapids WI 54495

## Today's Program

Jem Brown; Joel Mathews, "SmartHub & Use of Social Media"

Sept 7	Avenues of Service
Sept 14	Todd Buntrock
Sept 21	DaNita Carlson; Paul Liebherr, Love INC Update
Sept 28	Ryan Christianson
Oct 5	Kyle Cronan
Oct 12	Avenues of Service
Oct 19	Carol Davis
Oct 26	Bob Ebben
Nov 2	John Fanta
Nov 9	Felicia Gardner
Nov 16	Avenues of Service
Nov 30	Kristopher Gasch
Dec 7	Christmas Party at Alexander House
Dec 14	MaryJo Green
Dec 21	Kim Grover

### Charity Chase (Point Totals)

International Charity	0 pts
Vocational Charity	0 pts
Community Charity	0 pts
Club/Member Charity	0 pts
Every Rotarian Every Year	0 pts

### Rotary News

- We welcomed our new Rotary exchange student, Valencia Vargas from Bolivia.
- The next neighborhood table is August 31, we still need some help
- Dancing for a cause is Friday, October 20, we need more dance teams!
- We received a thank you note from Royal Family Kids for our support for the camp for foster care kids
- We also received a thank you from the Tri-Norse ski club for the contribution towards their mini-mudder event



#### Member Profile:

Tim Krueger, member since 2001, on the international committee.



#### Attendance: 24

Happy Pig: About \$18 was donated to the pig.

### OFFICERS 2015/2016

District Governor – Dean McHugh

President – Mary Jo Green

[Mary\\_jo\\_green@hotmail.com](mailto:Mary_jo_green@hotmail.com)

President Elect – TBD

Past President– Lisa Mayne

[rlmayne@charter.net](mailto:rlmayne@charter.net)

Treasurer – Elaine Semrow

[resem@solarus.net](mailto:resem@solarus.net)

Secretary

Bill Lindroth for RI reporting

[mwindroth@solarus.biz](mailto:mwindroth@solarus.biz)

Dennis McCarville for meetings

[dmccarville@hermeningfinancialgroup.com](mailto:dmccarville@hermeningfinancialgroup.com)

Sergeant at Arms – Kyle Cronan

[cronaky@pesd.k12.wi.us](mailto:cronaky@pesd.k12.wi.us)

Editor- Rick Merdan

[rmerdan@cfswc.org](mailto:rmerdan@cfswc.org)

### Paul Harris Fellows

Fred Stich (2)	Bob Plucker
Ellen Dahl	Pat Schuetz
Ed Heuer	Dean Ryerson
Kurt Heuer	Tom Schneider
Jere Johnson	Larry Schmick
Joe Lane	Larry Koopman
Lynda Almonte	Josh Mason
Sue Siewert	Dave Mueller
Joey Marshall (2)	Ida Lee Siewert (2)
Steve Sternitzky	Wayne Johnson
Elaine Semrow	Ken Hanson
Kim Auman	Rosie Anderson
Sally Young	George Hathaway
Ralph Lau	Dan McCarville
Mary Jo Green	Dean Veneman
Dennis McCarville	John Moffat (2)
Lorraine Schmutzer	Tim Krueger
Kristopher Gasch	Barry Jens
Tom Paul (2)	

### Club Chairpersons

#### Vocational Service

Gus Mancuso, co-chair

Carol Davis, co-chair

#### Community Service

Dave Guse, chair

#### International Service

Nancy Mischnick, co-chair

Tom Schneider, co-chair

#### Club Service / Membership

Rick Merdan, chair

### R.I. Foundation Liaison

Karen Kienert

### Polio Plus Chairperson

Tom Schneider

### Youth Exchange Officer

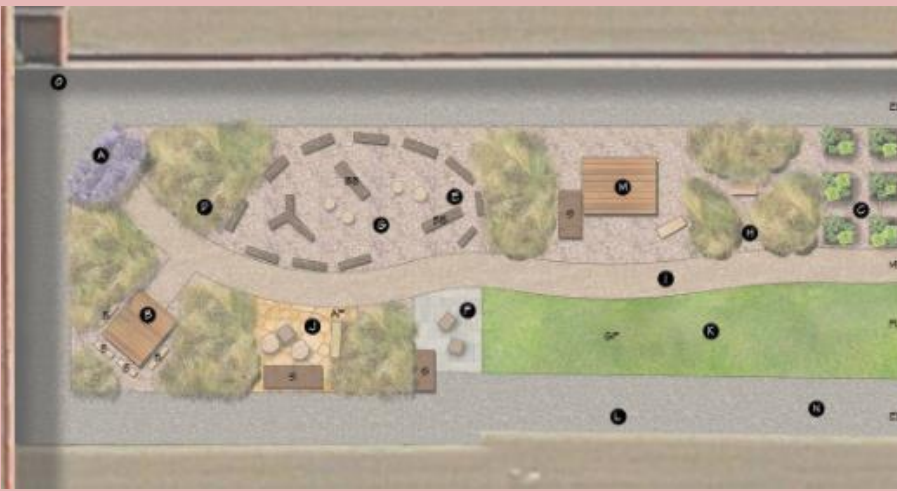
Felicia Gardner

### Youth Exchange Counselor

Tom Schneider

### Youth Protection Officer

TBD



## Melissa Miller “Outdoor Learning Classroom at Mead School”

One day during the summer of 2015, Melissa Miller, a second grade teacher in the WRPS system had an idea. Mead Elementary School has the highest poverty rate among the elementary schools in the Wisconsin Rapids area. Within the building and playground area is a courtyard that is essentially unused space.

Children today are facing what is called a "nature-deficit" due to an overuse of technology and staying indoors more often. Being outside benefits the brain. Not only does being outside in green space calm the brain, but it reduces stress, and increases focus and mindfulness- all of which can transfer to the indoor classroom. Students will have an opportunity for both outdoor education and social-emotional learning.

The overall multi-sensory vision of the space includes a Music and Movement Area, Gathering/Teaching Area, Garden Area, Climbing Area, Building Area, Nature Art Area and an Open Grass Area, along with various plantings, trees and pathways.

This facility will be available for use by both the students and staff of Mead Elementary and citizens of the community. The OLC will tie in with the future Mead Splash Pad and park renovation.

Help spread the word! Donations welcome and needed!



Melissa Miller



MaryJo and Valencia Vargas, new Rotary Exchange student from Bolivia

### Rotary 4-Way Test. Of the things we think, say or do:

1. *Is it the truth?*
2. *Is it fair to all concerned?*
3. *Will it build good will and better friendships?*
4. *Will it be beneficial to all concerned?*